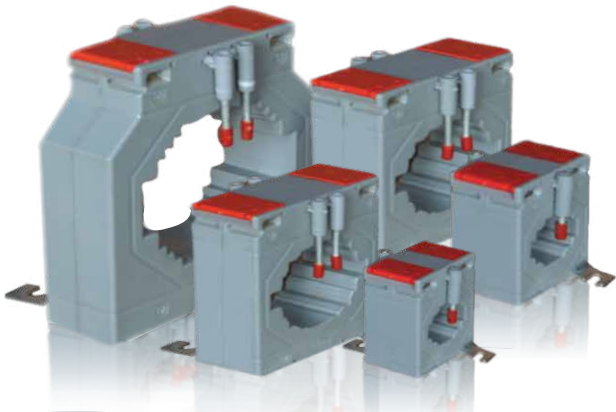


Current transformers - DEWA & SEC approved series

INNOVATIVE MODEL



Primary current (i)	CL(0.5)	CL(1)	CL(3)	Primary conductor (bar)	Primary conductor (round)
30A	-	-	-	20mm x 30mm	25MM
60A	-	-	-	20mm x 30mm	25MM
100A	1VA	1VA	1VA	20mm x 30mm	25MM
150A	1.5VA	1.5VA	1.5VA	20mm x 30mm	25MM
200A	2.5VA	2.5va	2.5VA	20mm x 30mm	25MM

Primary current (i)	CL(0.5)	CL(1)	CL(3)	Primary conductor (bar)	Primary conductor (round)
30A	-	-	1VA	40mm x 10mm	30MM
60A	-	1VA	1.5VA	40mm x 10mm	30MM
100A	1VA	1.5VA	2.5VA	40mm x 10mm	30MM
150A	1.5VA	2.5va	3.75VA	40mm x 10mm	30MM
200A	2.5VA	3VA	5VA	40mm x 10mm	30MM
300A	5VA	5va	7.5VA	40mm x 10mm	30MM
400A	7.5VA	7.5va	10VA	40mm x 10mm	30MM

Primary current (i)	CL(0.5)	CL(1)	CL(3)	Primary conductor (bar)	Primary conductor (round)
100A	-	-	2.5VA	60mm x 10mm, 50mmx30mm	50mm
200A	1VA	2.5va	3.75VA	60mm x 10mm, 50mmx30mm	50mm
300A	1.5VA	3VA	5VA	60mm x 10mm, 50mmx30mm	50mm
400A	2.5VA	5va	7.5VA	60mm x 10mm, 50mmx30mm	50mm
600A	5VA	7.5va	10VA	60mm x 10mm, 50mmx30mm	50mm
800A	7.5VA	10va	15VA	60mm x 10mm, 50mmx30mm	50mm

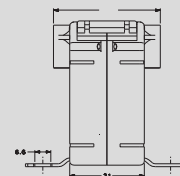
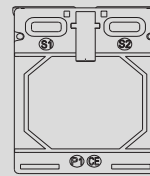
Primary current (i)	CL(0.5)	CL(1)	CL(3)	Primary conductor (bar)	Primary conductor (round)
200A	1.5VA	2.5va	5VA	80mm x 10mm, 60mmx30mm	65mm
300A	2.5VA	5VA	7.5VA	80mm x 10mm, 60mmx30mm	65mm
400A	5VA	7.5va	10VA	80mm x 10mm, 60mmx30mm	65mm
600A	7.5VA	10va	15VA	80mm x 10mm, 60mmx30mm	65mm
800A	10VA	12.5va	25VA	80mm x 10mm, 60mmx30mm	65mm
1200A	12.5VA	15va	30VA	80mm x 10mm, 60mmx30mm	65mm

Primary current (i)	CL(0.5)	CL(1)	CL(3)	Primary conductor (bar)	Primary conductor (round)
1000A	5VA	7.5VA	10VA	100mm x 30mm, 80mmx50mm	80mm
1200A	7.5VA	10VA	15VA	100mm x 30mm, 80mmx50mm	80mm
1600A	10VA	15VA	25VA	100mm x 30mm, 80mmx50mm	80mm
2000A	15VA	25VA	30va	100mm x 30mm, 80mmx50mm	80mm
2400A	25VA	30va	40VA	100mm x 30mm, 80mmx50mm	80mm

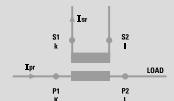
Technical features

SPECIFICATIONS	
Reference specification	EN/IEC 61869-1, 61869-2
Rated primary current Ipr:	1600A
Working frequency:	47...63Hz
Rated continuous thermal current Icth:	100% Ipr
Rated short-time thermal current Ith:	< 60Ipr
Rated dynamic current Idyn :	2.5Ith
Instrument security factor (FS):	≤ 5
Rated secondary current Isr :	5
Max. power dissipation	≤ 20W
Allowed max cable or busbar temperature:	125°C
INSULATION REQUIREMENTS	
Type	Dry transformer, air insulation
Highest voltage for equipment Um:	0.72kV r.m.s.
Rated insulation level:	3kV r.m.s. 50Hz/1min
ENVIRONMENTAL CONDITIONS	
Nominal temperature range:	-25...50°C
Limit temperature range for storage:	-40...85°C
Relative humidity:	≤ 85%
Suitable for tropical climates	yes
CONNECTION	
Primary winding:	Passing bus bar
Secondary winding:	tightening by nut M4
MECHANICAL FEATURES	
Housing material:	self extinguishing polycarbonate
Mounting:	screw type on bar
Weight:	1150 gr

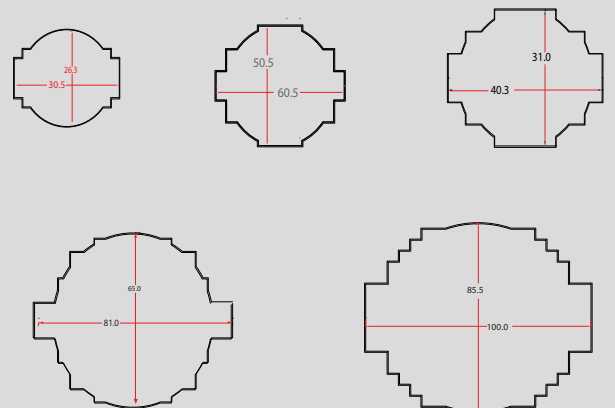
Dimensions



Wiring diagrams



MODEL	A (mm)	B (mm)	C (mm)
ILC 30	78	50	32
ILC 40	78	62	40
ILC 60	110	86	45
ILC 80	128	104	45
ILC 100	155	140	62



NOTE: On request orders for types different from table are accepted. 1A Secondary available

